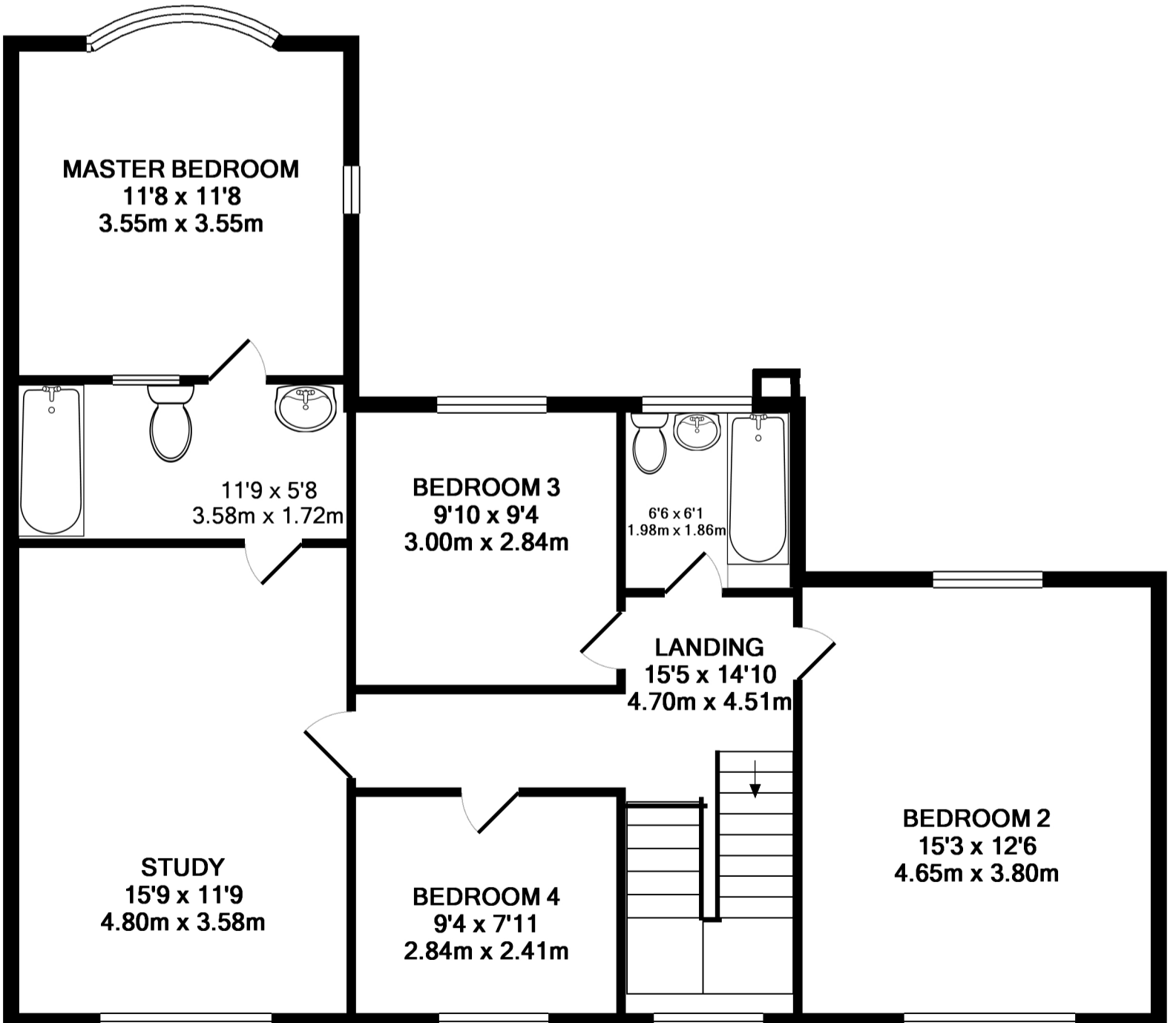


GROUND FLOOR
APPROX. FLOOR
AREA 100.5 SQ.M.
(1082 SQ.FT.)



1ST FLOOR
APPROX. FLOOR
AREA 85.4 SQ.M.
(920 SQ.FT.)

TOTAL APPROX. FLOOR AREA 186.0 SQ.M. (2002 SQ.FT.)

Measurements are approximate. Not to scale. Illustrative purposes only
Made with Metropix ©2009