


Energy Efficiency Rating		
	Current	Potential
<i>Very energy efficient - lower running costs</i>		
(92+) A		
(81-91) B		
(69-80) C		77
(55-68) D	65	
(39-54) E		
(21-38) F		
(1-20) G		
<i>Not energy efficient - higher running costs</i>		
England, Scotland & Wales	EU Directive 2002/91/EC	



Vale Crescent,
Kingston Vale,
London

RENT £1,350 per month

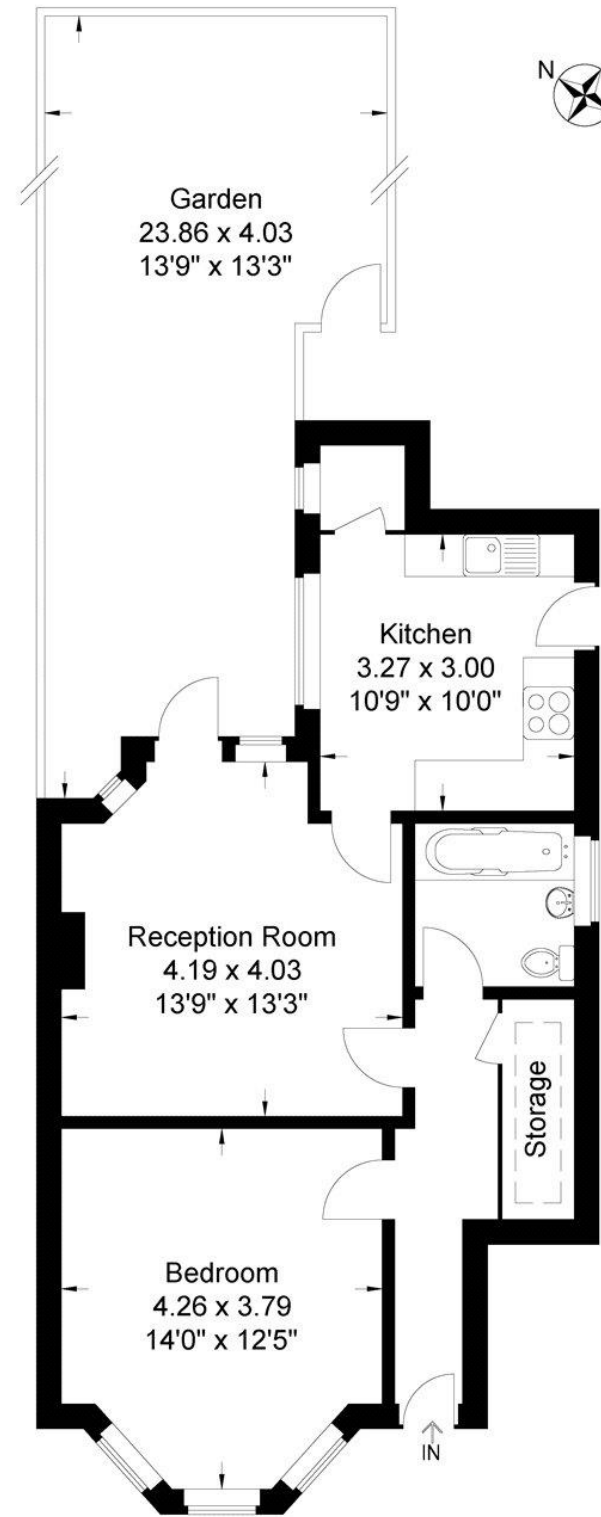


+44 (0)20 8947 9393
COOMBERESIDENTIAL.COM
259 COOMBE LANE WIMBLEDON LONDON SW20 0RH





Vale Crescent
 Approximate Gross Internal Area
 53.74 sq m / 578.45 sq ft



Ground Floor

Illustration for identification purposes only, measurements are approximate, not to Scale

Vale Crescent, Kingston Vale, London, SW15 3PN

A beautifully presented ground floor, one-bedroom flat with own garden. The landlord has refurbished the flat over recent years so the kitchen and bathroom are modern. Neutrally decorated throughout and fully furnished.

THE PROPERTY

ACCOMMODATION COMPRISES:

ENTRANCE HALL WITH STORAGE CUPBOARD | RECEPTION ROOM WITH DOOR TO GARDEN | KITCHEN/BREAKFAST ROOM WITH PANTRY | DOUBLE BEDROOM

AMENITIES INCLUDE:

FRONT AND REAR GARDENS | GAS CENTRAL HEATING | DOUBLE GLAZING

FURNISHED

AVAILABLE END OF OCTOBER 2021

RENT £1,350 per month

NOTE No warranty is given concerning this property, its fittings, equipment or appliances as they have not been tested by the Vendors Sole Agents. Measurements are approximate and no responsibility is taken for any error, or mis-statement in these particulars which do not constitute an offer or contract. No representation or warranty whatever is made or given either during negotiations, in particular or elsewhere. No part of this publication may be reproduced in any form without prior written permission of Coombe Residential Ltd. All rights reserved.