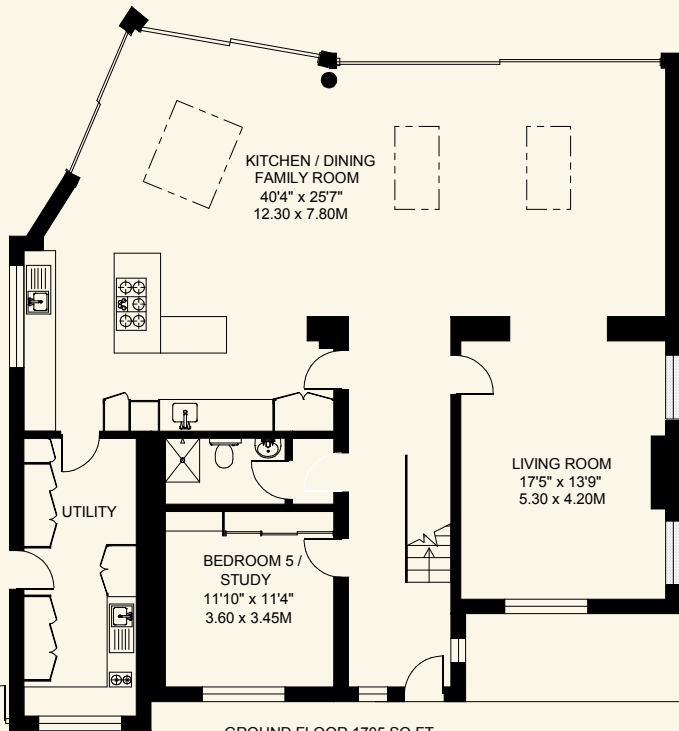


**BURGHLEY AVENUE  
NEW MALDEN KT3**

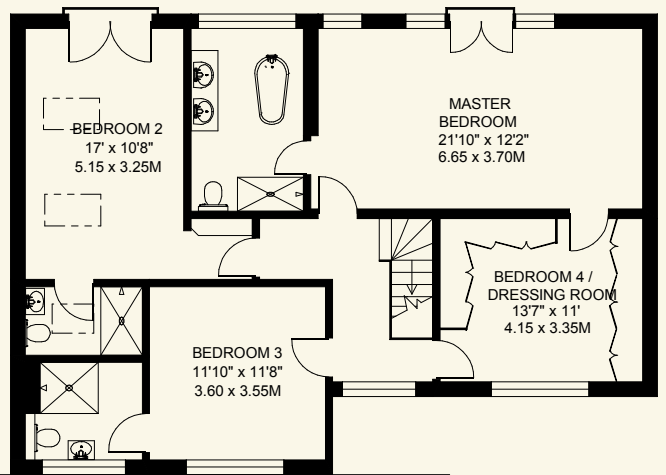
APPROXIMATE INTERNAL FLOOR ( LIVING ) AREA  
2803 SQ.FT / 260.4 SQ.M.



GARDEN  
93'6" x 50'6"  
28.50 x 15.40M

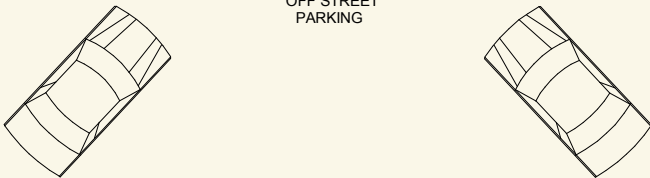


GROUND FLOOR 1705 SQ.FT.



FIRST FLOOR 1098 SQ.FT.

GARDEN /  
OFF STREET  
PARKING



COPYRIGHT: PLAN PRODUCED FOR "COOMBE RESIDENTIAL" BY FLOORPLANNERS 07801 228850  
ALL MEASUREMENTS ARE MAXIMUM AND INCLUDE WINDOW BAYS AND WARDROBES WHERE APPLICABLE  
THIS PLAN MUST NOT BE REPRODUCED BY ANY OTHER PERSON WITHOUT PERMISSION