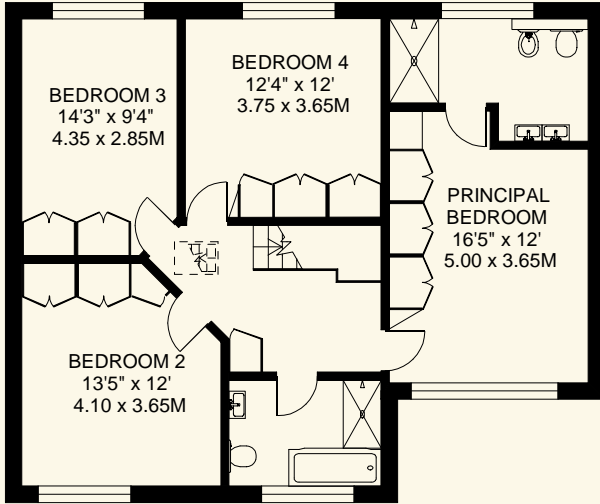
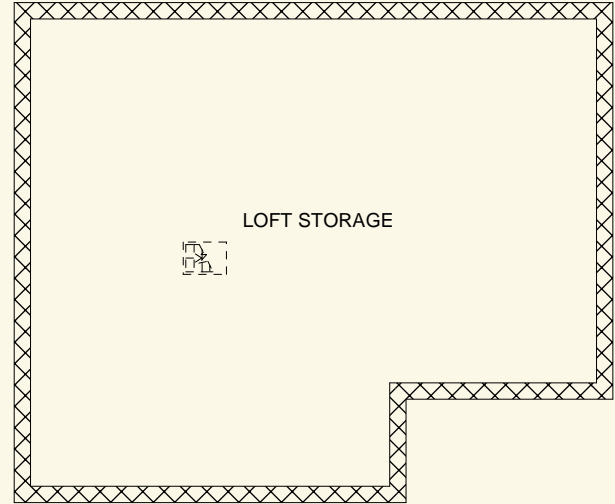


11, DELL WALK  
NEW MALDEN KT3

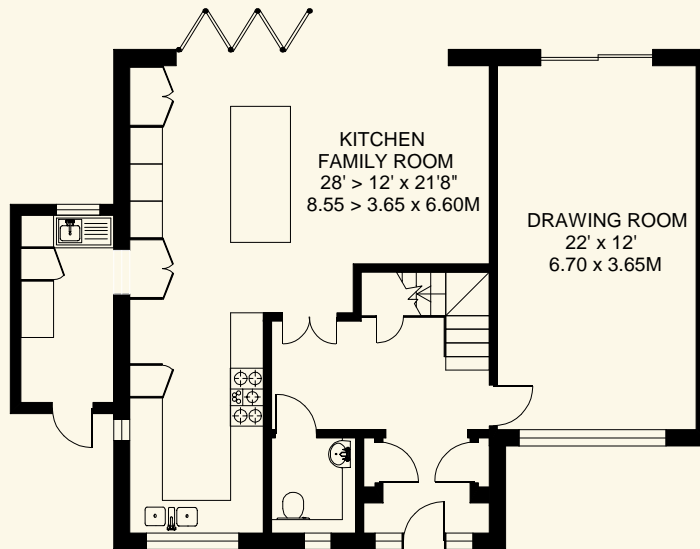
APPROXIMATE INTERNAL FLOOR ( LIVING ) AREA  
 ■ = 1845 SQ.FT / 171.4 SQ.M.  
 APPROXIMATE ADDITIONAL AREAS  
 ▨ = 885 SQ.FT. / 82.2 SQ.M.  
 TOTAL AREAS SHOWN ON PLAN  
 2730 SQ.FT. / 253.6 SQ.M.



FIRST FLOOR 885 SQ.FT.



GARDEN  
 28'3" x 51'2"  
 8.60 x 15.60M



GROUNDS FLOOR 960 SQ.FT.

DRIVEWAY  
 26'10" x 51'2"  
 8.20 x 15.60M

COPYRIGHT: PLAN PRODUCED FOR 'COOMBE RESIDENTIAL' BY FLOORPLANNERS 07801 228850  
 ALL MEASUREMENTS ARE MAXIMUM AND INCLUDE WINDOW BAYS AND WARDROBES WHERE APPLICABLE  
 THIS PLAN MUST NOT BE REPRODUCED BY ANY OTHER PERSON WITHOUT PERMISSION