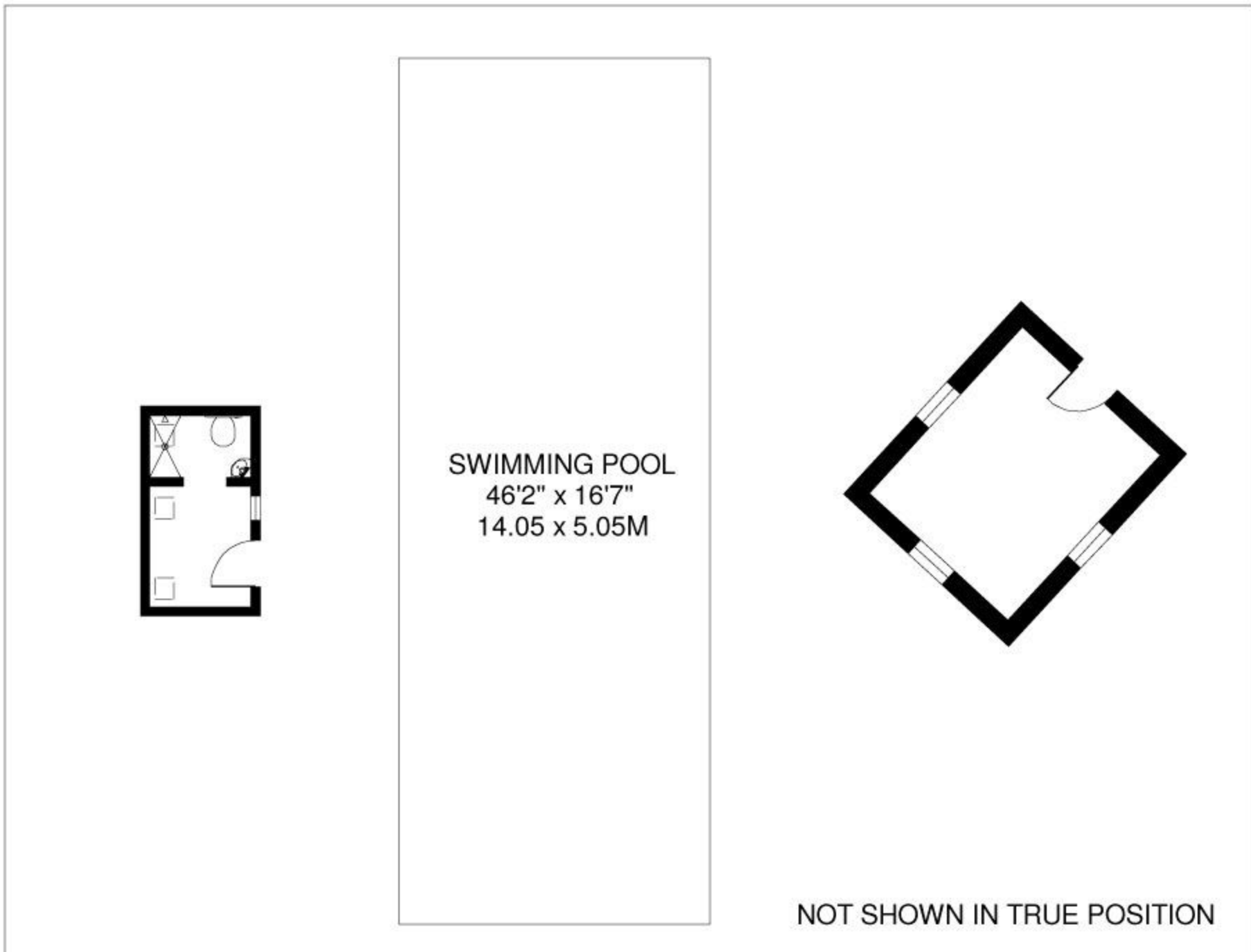
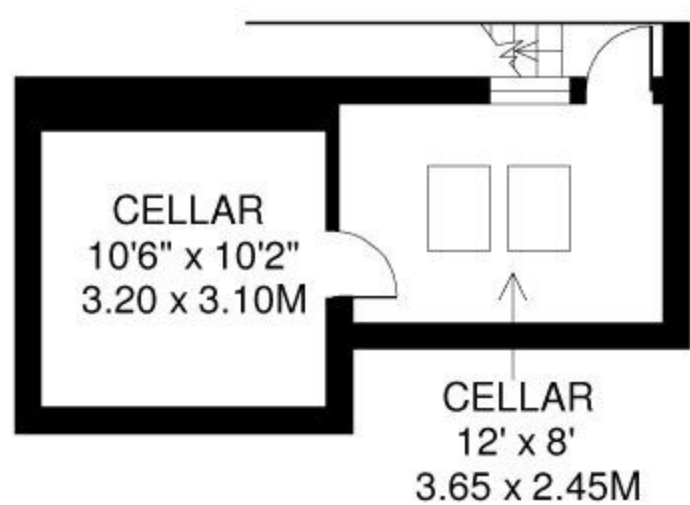
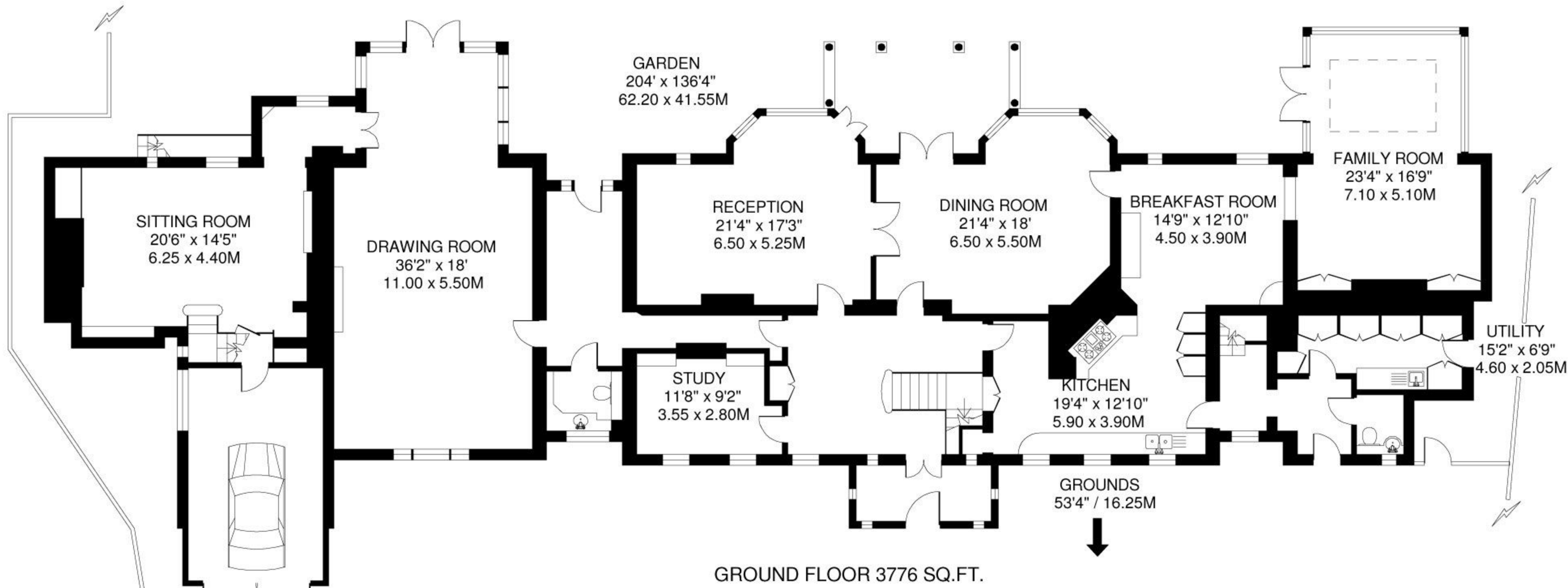
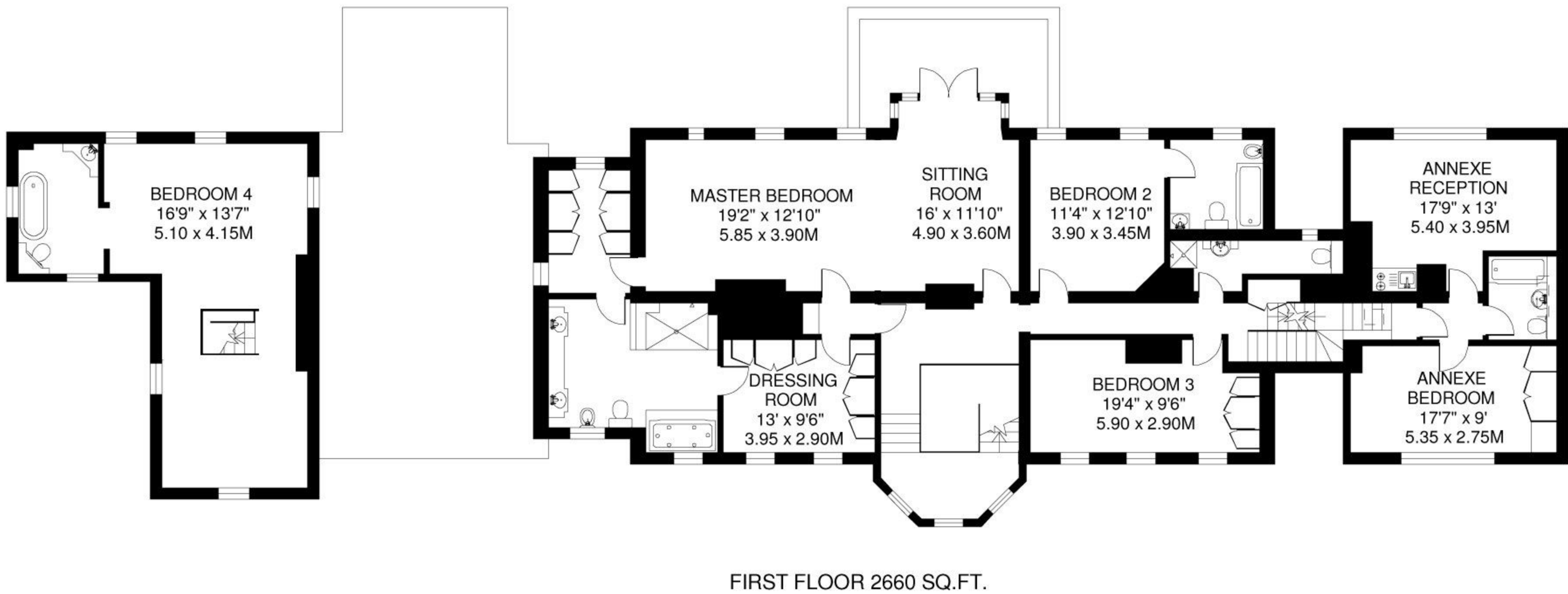
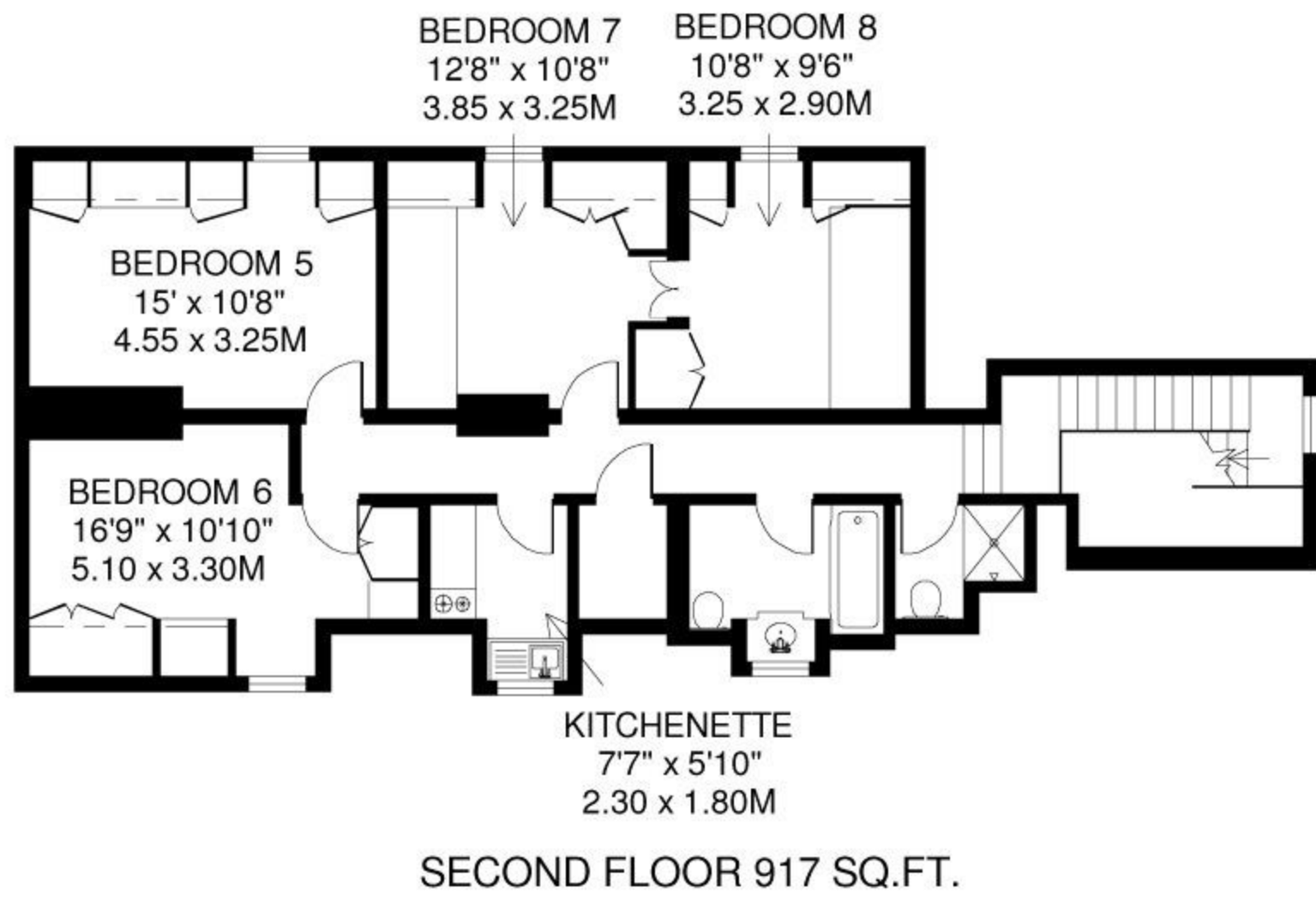


KINGSTON-UPON-THAMES, SURREY

APPROXIMATE INTERNAL FLOOR AREA
7560 SQ.FT. / 702.2 SQ.M.
PLUS SHOWN OUTBUILDINGS 175 SQ.FT. / 16.3 SQ.M.



ALL MEASUREMENTS ARE MAXIMUM, AND INCLUDE WINDOW BAYS AND WARDROBES WHERE APPLICABLE
WHERE A ROOM HAS A SLOPING CEILING, THE DOTTED LINE MARKS 1.50M HEIGHT,
AND THE MEASUREMENTS ARE SHOWN AT FLOOR LEVEL